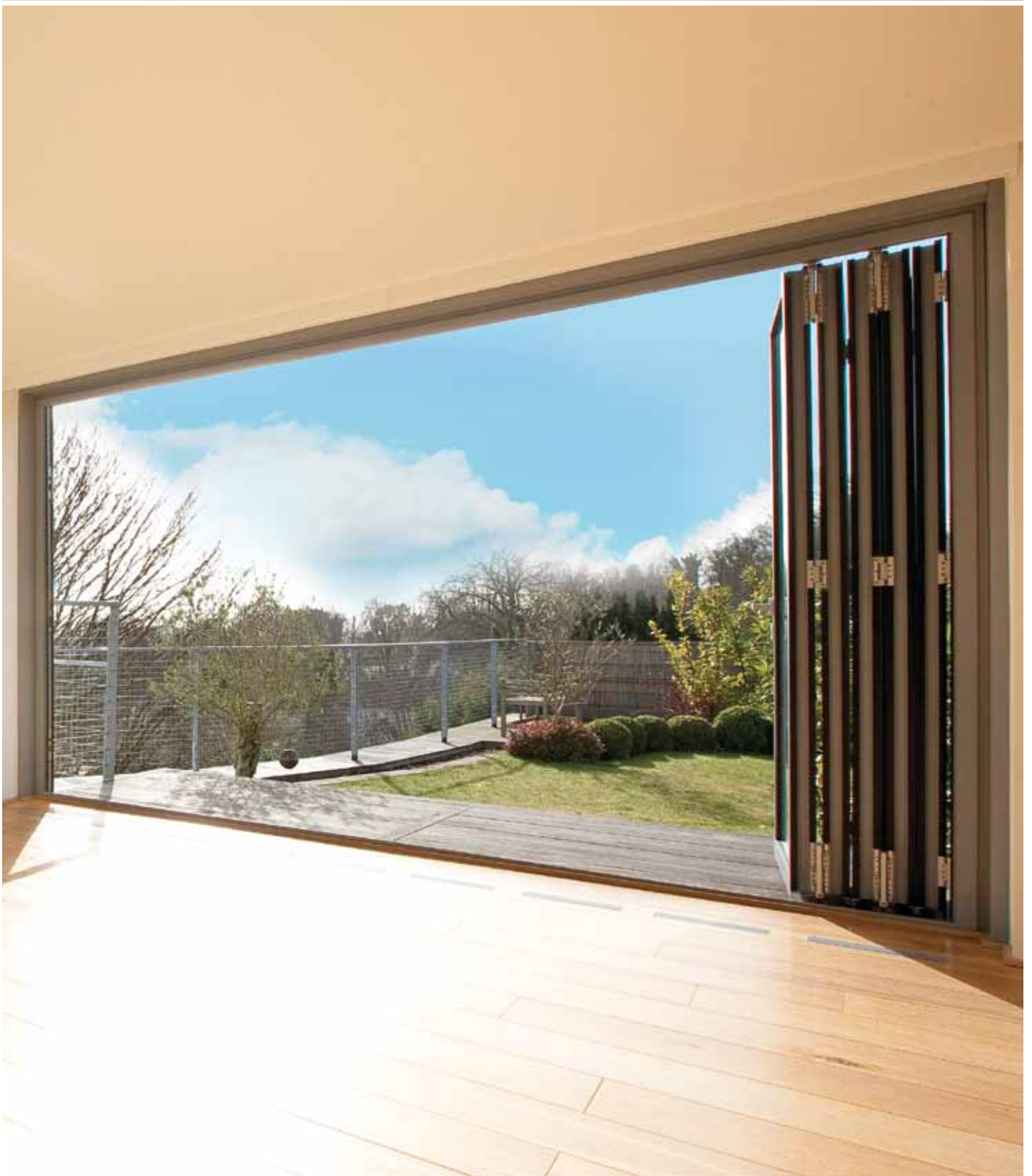
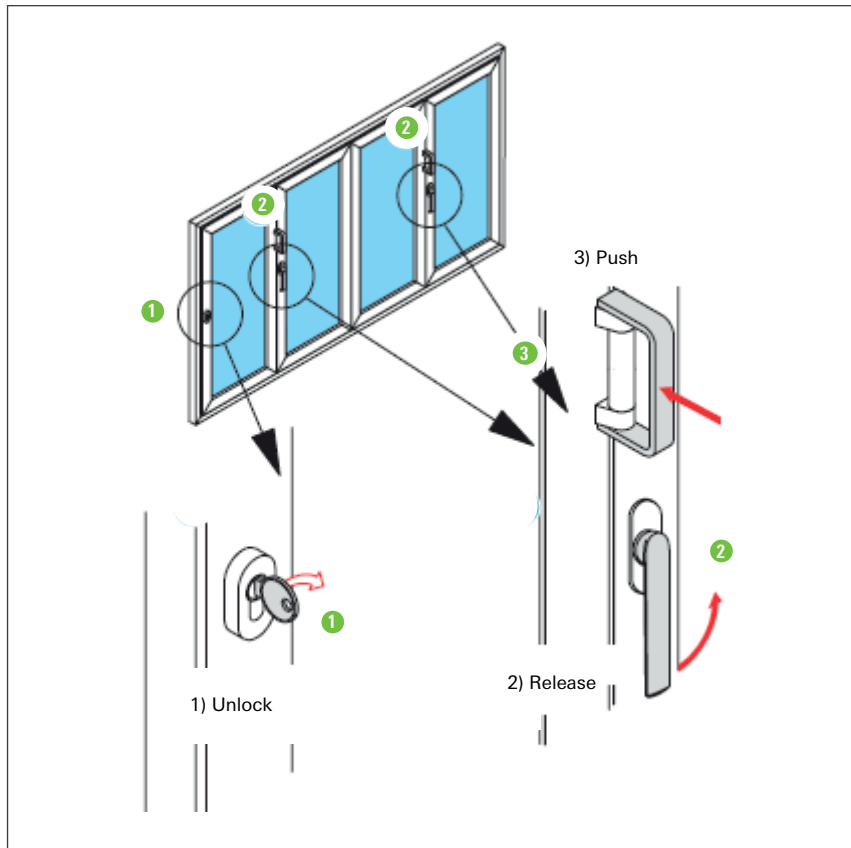


ASS 70 FD folding/sliding door operation and maintenance guide



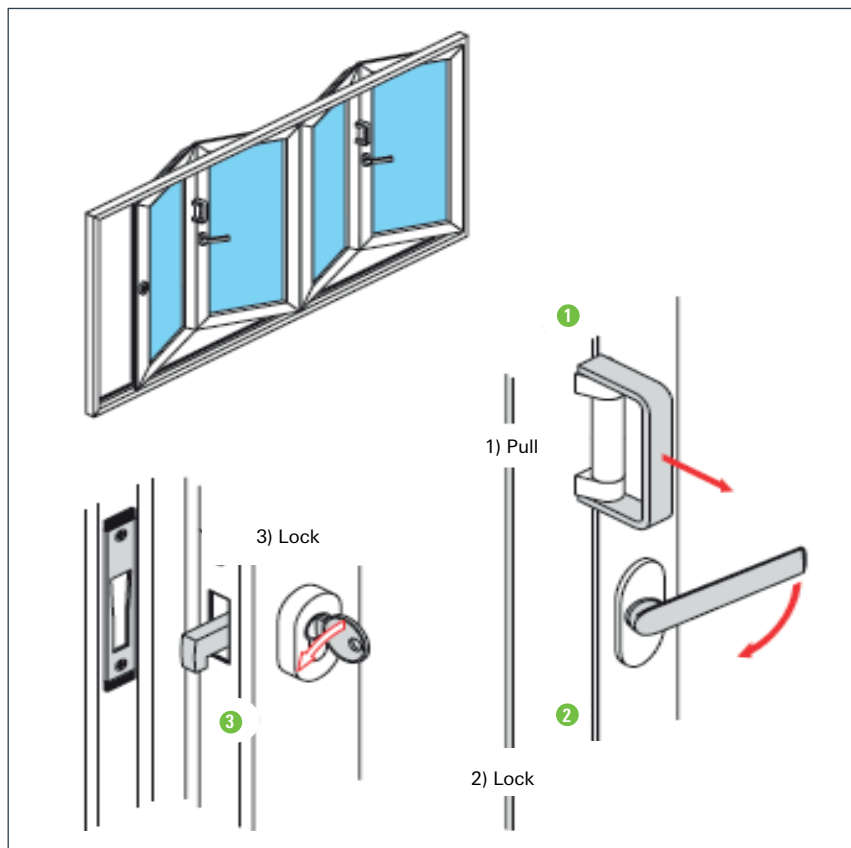
Units with an even number of stacking leaves (outward opening described)



To open:

1. Unlock by turning the key ①.
2. Unlock the folding unit locking points by turning the lever handle upwards ②.
3. Open leaf by pushing the handles ③.
4. Open leaf.

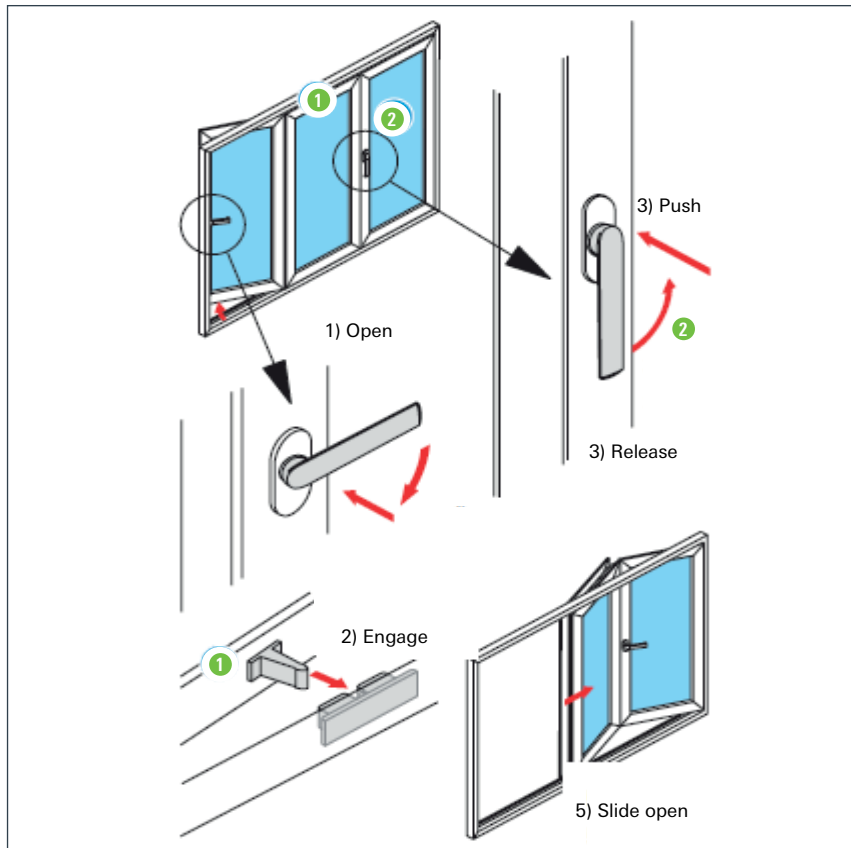
Note: during opening and closing do not touch the units at the folds.



To close:

1. Pull the leaves into the perimeter frame using the door pulls ①.
2. Lock the folding unit locking points by turning the lever handle downwards ②.
3. Lock by turning key in the lock ③. (A different lock to the one illustrated may be fitted.)

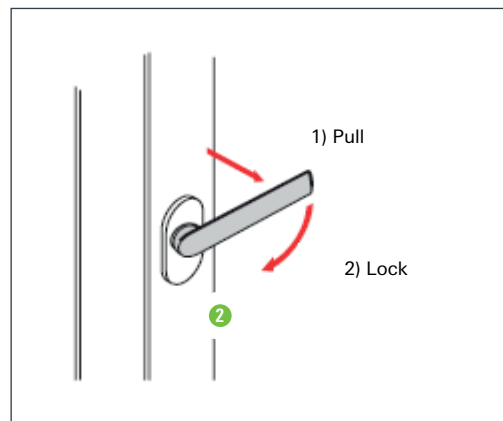
Units with an odd number of stacking leaves (outward opening described)



To open:

1. Open access leaf 180°.
2. Engage the catch on the adjacent leaf ①.
3. Unlock the folding unit locking points by turning the lever handle upwards ②.
4. Push the handle up.
5. Slide the folding unit open.

Note: during opening and closing do not touch the units at the folds.



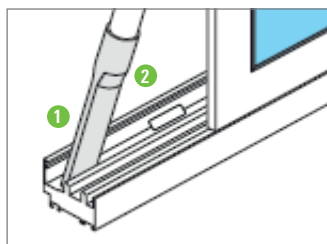
To close:

1. Pull the sliding units shut using the door pulls ②.
2. Lock the folding units.
3. Close the access door.

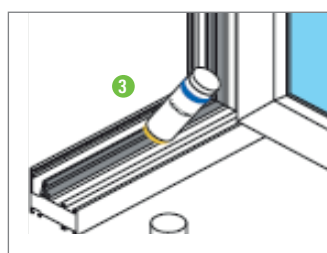
Maintenance guide

All moving parts are virtually maintenance free but will benefit from a simple annual maintenance. A small amount of acid-free grease or oil will help maintain the smooth running of the mechanics and ensure ease of use over a long period.

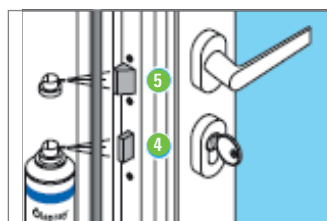
Only a light application is necessary and to prevent dirt accumulating, remove excess lubricant after use.



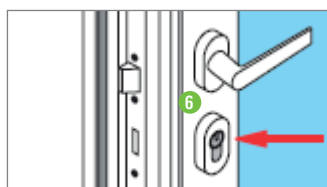
Clear out any debris from the bottom track and vacuum out any dust and dirt **1**. Clear any blocked drainage slots or holes **2**.



To maintain the suppleness and weather performance of the gaskets, rub them with a grease stick or vaseline **3**. The gaskets are fitted to the perimeter frame and the door leaves. Check also for any damage to the gaskets. Contact your supplier if they need replacing.



The bolt **4** and latch **5** to be lubricated as necessary.



Graphite powder should be used for lubrication of the locking cylinder **6**.



General cleaning

For the best care of your folding/sliding doors clean the frames and gaskets every time the glass is cleaned. Use a mild, non-scouring cleaning agent.

Solid substances

Plaster, mortar or similar is best removed with a wooden or plastic spatular.



The following items must NOT be used for cleaning:

Tools with sharp edges, e.g. knives, metal scrapers, steel wool, the scouring side of household sponges etc, will damage surfaces. Aggressive cleaning fluids or solvents e.g. cellulose thinners, nail polish remover etc., will also cause irreversible damage to the door frame surface.

Schueco UK Ltd
www.schueco.co.uk

**Schueco – System solutions for windows, doors, façades
and solar products.**

Together with its worldwide network of partners, architects, specifiers and investors, Schueco creates sustainable building envelopes which focus on people and their needs in harmony with nature and technology. The highest demands for design, comfort and security can be met, whilst simultaneously reducing CO₂ emissions through energy efficiency, thereby conserving natural resources. The company and its Metal, PVC-U and New Energies divisions deliver tailored products for newbuilds and renovations, designed to meet individual user needs in all climate zones.

For further information: